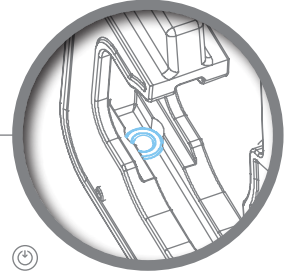


LOCK
Enables quick opening and closing head.

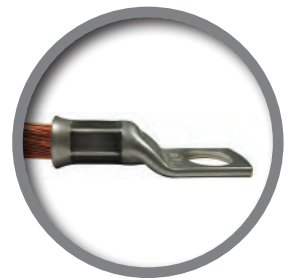


XD51



CRIMPING HYDRAULIC HEAD

700 bar

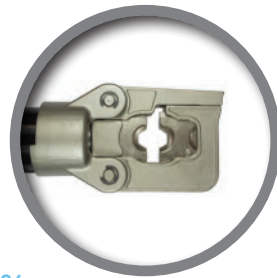
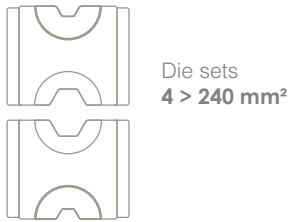
HEXAGONAL CRIMPING 4 > 240 mm²




> Identical force, stroke and capacities as the hand tool **D51** and the battery operated tools **BPE055** & **BPL055**.

-  **BALL HEAD DOWEL**
Enables setting of 38 mm width die (manufactured by DUBUIS) or 30 mm (manufactured by other companies).
-  **INTERCHANGEABLE DIE SETS**
Simple or reversible.

STROKE	13 mm
FORCE	55 kN
DIMENSIONS (L x l x h in mm)	180 x 53 x 74
WEIGHT	1.750 kg



 **DIE SETS** – Refer to **PAGES 88 – 96**.

> Common interchangeable die sets for **D51**, **BPE055** & **BPL055** tools.

APPLICATIONS	SECTIONS
 Copper lugs and sleeves – NFC 20-130	4 > 240 mm
 Copper or alu. lugs and sleeves – DIN 48083	KZ6 > KZ32
 C-shaped connectors	C6 > C35
 Pre-rounding die sets	6 > 240 mm ²
 Bare or insulated sleeves in copper or alu.	E54 > E215

 **FITTINGS & HOSES**
> Refer to **PAGE 67**.