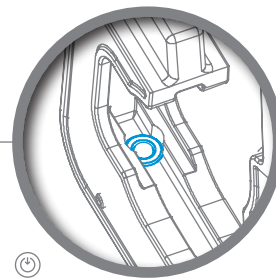


**QUICK OPENING & CLOSING HEAD**  
Easy to replace die sets.

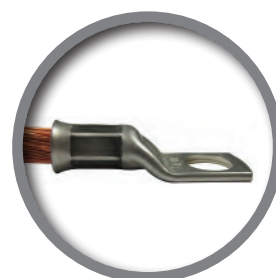


NEOELEC™  
**BPL055**

HYDRAULIC CRIMPING TOOL  
IN LINE TYPE

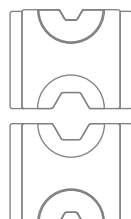


**HEXAGONAL CRIMPING**  
4 > 240 mm<sup>2</sup>

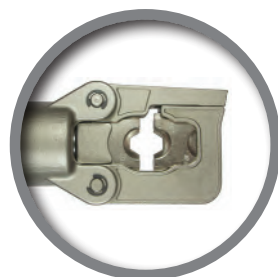


> Identical force, stroke and capacities as **D51**, **XD51** and the battery operated tool **BPE055**.

-  **BALL HEAD DOWEL**  
Enables setting of 38 mm width die (manufactured by DUBUIS) or 30 mm (manufactured by other companies).
-  **INTERCHANGEABLE DIE SETS**  
Simple or reversible.
-  **ROTATIVE HEAD**  
180°








Die sets  
4 > 240 mm<sup>2</sup>



 **DIE SETS** – Refer to **PAGES 88 – 96**.

> Common interchangeable die sets for **D51**, **BPE055** & **BPL055** tools.

<b>STROKE</b>	13 mm
<b>FORCE</b>	55 kN
<b>CRIMPING TIME</b> (depending on section)	3 to 5 s
<b>BATTERY CAPACITY</b> (for 185 mm <sup>2</sup> copper lug)	220 crimps
<b>DIMENSIONS</b> (L x l x h in mm)	128 x 75 x 390
<b>WEIGHT</b> (with battery)	2.900 kg

APPLICATIONS	SECTIONS
 Copper lugs and sleeves – NFC 20-130	4 > 240 mm <sup>2</sup>
 Copper or alu. lugs and sleeves – DIN 48083	KZ6 > KZ32
 C-shaped connectors	C6 > C35
 Pre-rounding die sets	6 > 240 mm <sup>2</sup>
 Bare or insulated sleeves in copper or alu.	E54 > E215

<b>DIMENSIONS</b> (mm)	471 x 415 x 116
<b>WEIGHT</b>	2.050 kg

> Case and charger delivered with the tool.  
> **NEOELEC™** accessories Refer to **PAGE 56 – 57**.

