



**QUICK OPENING & CLOSING HEAD**  
Easy to replace die sets.

NEOELEC™  
**BPE031**

HYDRAULIC CRIMPING TOOL  
MINI PISTOL TYPE

18V  
2Ah

HEXAGONAL CRIMPING  
4 > 95 mm<sup>2</sup>

> Identical force, stroke and capacities as the manual tool **D31** and the battery operated tool **BPL031**.



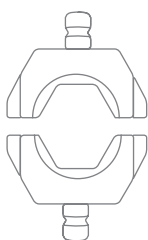
**NARROW HEAD**  
To work in switchboards.



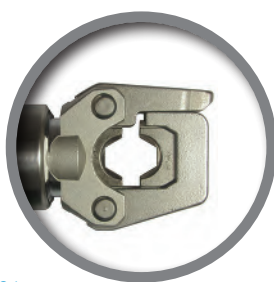
**EXCELLENT RATIO WEIGHT/CAPACITIES**  
2.360 kg – 35 kN – 95 mm<sup>2</sup>



**ROTATIVE HEAD**  
180°



Die sets  
4 > 95 mm<sup>2</sup>



**DIE SETS** – Refer to **PAGES 88 – 96**.

> Common interchangeable die sets for **D31, BPE031 & BPL031** tools.

<b>STROKE</b>	8 mm
<b>FORCE</b>	35 kN
<b>CRIMPING TIME</b> (depending on section)	3 to 4 s
<b>BATTERY CAPACITY</b> (for 95 mm <sup>2</sup> copper lug)	270 crimps
<b>DIMENSIONS</b> (L x l x h in mm)	260 x 60 x 240
<b>WEIGHT</b> (with battery)	2.360 kg

APPLICATIONS	SECTIONS
Copper lugs and sleeves – NFC 20-130	4 > 95 mm <sup>2</sup>
Bare or insulated sleeves in copper or alu – EDF	E54 > E140
Copper or alu lugs and sleeves – DIN 48083	KZ4 > KZ18
C-shaped connectors	C6 > C16
Copper lugs and sleeves – NFC 20-130	10 > 70 mm <sup>2</sup>



<b>DIMENSIONS</b> (mm)	520 x 440 x 130
<b>WEIGHT</b>	2.300 kg

> Case and charger delivered with the tool.  
> **NEOELEC™** accessories  
Refer to **PAGE 56 – 57**.