


CATALOG



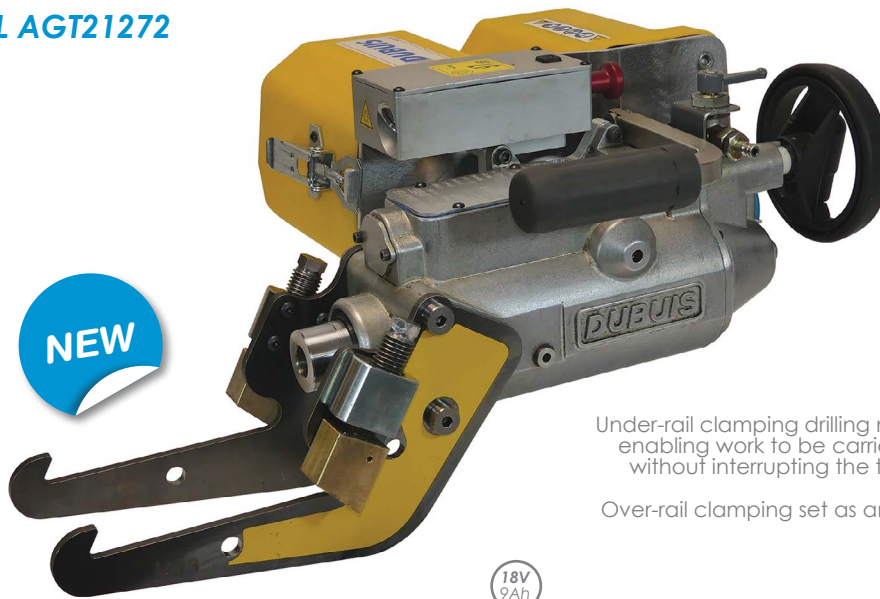
English version 



**SPECIALIST IN HYDRAULIC TOOLS FOR CUTTING
AND CRIMPING SINCE 1949**

BATTERY DRILLING MACHINE

SNCF APPROVAL AGT21272



Under-rail clamping drilling machine enabling work to be carried out without interrupting the traffic

Over-rail clamping set as an option

18V
9Ah

DP4CC

DRILLING CAPACITY

Reamer drills up to Ø22

Annular cutters up to Ø38 with central spray system

DIMENSIONS (L x l x h in mm)

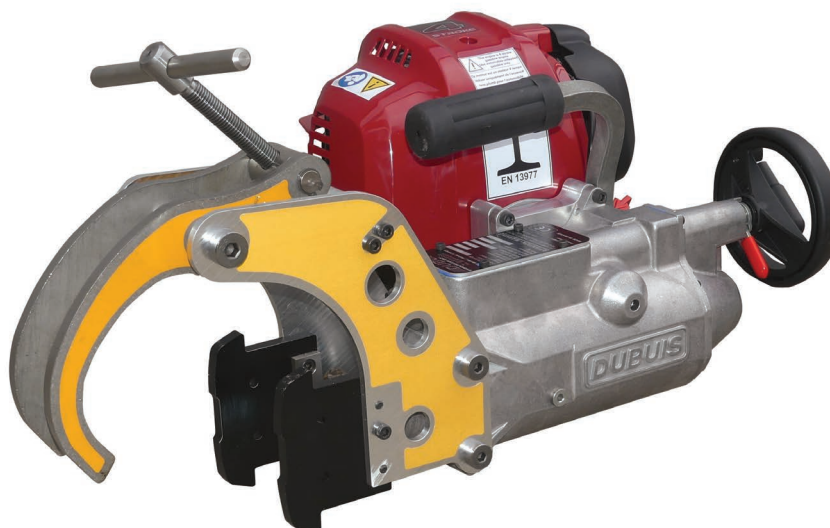
910x518x431

WEIGHT (without batteries - clamping)

19.000 kg

Delivered in carrying case with charger and 2 batteries 9.0Ah

SNCF APPROVAL AGT21273



DP4TH

DRILLING CAPACITY

Reamer drills up to Ø22

Annular cutters up to Ø38 with central spray system

DIMENSIONS (L x l x h in mm)

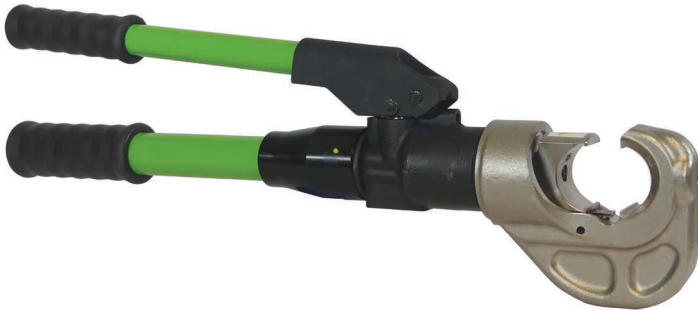
560x340x275

WEIGHT

19.700 kg

Delivered in carrying case

CRIMPING TOOLS



MPL1301

APPLICATIONS	Hexagonal crimping 10 to 300mm ²
STROKE	26mm 38mm available with MPL1303
DIMENSIONS (L x l x h in mm)	565x70x160
FORCE	130kN
WEIGHT	5.270 kg

Delivered in carrying case



INTELED™ ILLUMINATION TECHNOLOGY
ILLUMINATES WORK AREA & PROVIDES CRIMP FEEDBACK

NEOELEC™ BPP1303

18V
5Ah

APPLICATIONS	Hexagonal crimping 10 to 400mm ²
PROTECTION RATING	IP 44
STROKE	38mm 26mm available with BPP1301
DIMENSIONS (L x l x h in mm)	425x86x335
FORCE	130kN
WEIGHT (with battery)	7.300 kg

Delivered in carrying case with charger and 5.0Ah battery



D36

APPLICATIONS	Hexagonal crimping 4 to 150mm ²
DIMENSIONS (L x l x h in mm)	215x52x175
FORCE	36kN
WEIGHT	1.360 kg

Delivered in carrying case



NEOELEC™ BPL036

18V
2Ah

APPLICATIONS	Hexagonal crimping 4 to 150mm ²
DIMENSIONS (L x l x h in mm)	355x75x128
FORCE	36kN
WEIGHT (with battery)	2.150 kg

Delivered in carrying case with charger and 2.0Ah battery

CRIMPING HEADS



XH220

APPLICATIONS	Crimping of overhead contact conductors up to 475mm ²
DIMENSIONS (L x l x h in mm)	290x140x900
FORCE	220kN
WEIGHT	5.200 kg

Use with DUBUIS hydraulic power packs



XPH1303

APPLICATIONS	Hexagonal crimping 10 to 400mm ²
STROKE	38mm 26mm available with XPH1301
FORCE	130kN
DIMENSIONS (L x l x h in mm)	240x70x112
WEIGHT	4.300 kg

Use with DUBUIS hydraulic power packs

HYDRAULIC POWER PACK



18V
5Ah

NEOELEC™ BGH701

APPLICATIONS	All tools requiring an external hydraulic source of 700bar
DIMENSIONS (L x l x h in mm)	373x60x260
PRESSURE	700bar
WEIGHT (with battery)	6.000 kg

Delivered in carrying case with charger and 5.0Ah battery, remote control and oil can.

This power pack is designed for intermittent use due to its optimal weight and compactness.



PHE706

APPLICATIONS	All tools requiring an external hydraulic source of 700bar
DIMENSIONS (L x l x h in mm)	380x200x420
PRESSURE	700bar
WEIGHT	17.000 kg

Delivered in carrying case with remote control and oil can.
This power pack is designed for intensive use.

SNCF APPROVAL AGT22526



NEW

18V
5Ah

NEOELEC™ BGH702 BGH701 backpack version

APPLICATIONS	All tools requiring an external hydraulic source of 700bar. Outdoors
PROTECTION RATING	IP 54 (Backpack version)
DIMENSIONS (L x l x h in mm)	500x160x300
PRESSURE	700bar
WEIGHT (with battery)	7.100 kg

Delivered in carrying case with charger and 5.0Ah battery.
This power pack is designed for intermittent use due to its optimal weight and compactness.

MULTITOOLS



Also available in BPE063 and BPL063



NEOELEC™ BPP063

18V
5Ah

APPLICATIONS	This tool accepts crimping, cable cutting and punching heads
PROTECTION RATING	IP 44
DIMENSIONS (L x l x h in mm)	373x60x260
FORCE	62kN
WEIGHT (without head, with battery)	6.000 kg

Delivered in carrying case with charger and 5.0Ah battery.



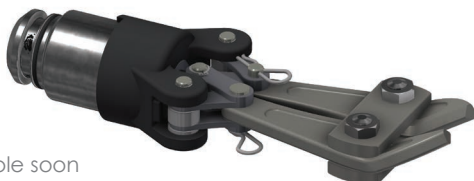
XCM050

APPLICATIONS	Copper and aluminum cutting up to Ø50,8mm (2 inches)
DIMENSIONS (L x l x h in mm)	275x66x125
WEIGHT	3.350 kg



XGM025

APPLICATIONS	Steel, copper and aluminum cutting up to Ø25mm
DIMENSIONS (L x l x h in mm)	185x85x55
WEIGHT	1.950 kg



Available soon

XCM008

APPLICATIONS	Threaded rod up to M10 Mild steel bar up to Ø8mm
DIMENSIONS (L x l x h in mm)	185x85x55
WEIGHT	1.950 kg

Delivered with straight blades and curved blades.

MULTITOOLS



XPM062

APPLICATIONS	Hexagonal crimping 6 to 300mm ²
DIMENSIONS (L x l x h in mm)	170x56x100
WEIGHT	1.800 kg



XPM060F

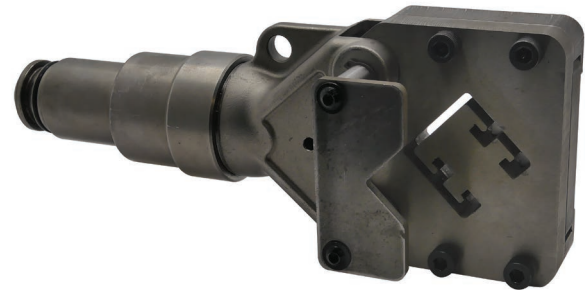
Flip-top 4 indents, Dieless crimping

APPLICATIONS	Copper Connectors 10 to 400mm ² (8AWG to 750Kcmil) Aluminum Connectors 10 to 300mm ² (8AWG to 600Kcmil)
DIMENSIONS (L x l x h in mm)	265x65x135
WEIGHT	3.000 kg



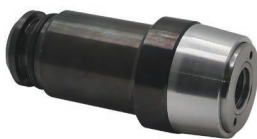
95815

APPLICATIONS	Steel Omega DIN rail cutter, steel G DIN rail cutter, Copper grounding Oblong punching for M6
DIMENSIONS (L x l x h in mm)	220x55x100
WEIGHT	2.700 kg



95818

APPLICATIONS	STRUT rail galvanized steel cutter 41x21, 41x41 up to 2.5mm
DIMENSIONS (L x l x h in mm)	290x90x115
WEIGHT	5.200 kg



XHM062

APPLICATIONS	Round punch up to Ø63.5mm Square punch up to 50.8x50.8mm Rectangular punch up to 36x86mm
DIMENSIONS (L x l x h in mm)	Ø54x120
WEIGHT	1.000 kg

Available soon



XPM061

APPLICATIONS	Hexagonal crimping DIN 48083-1 dies Copper/Aluminum 6 to 240mm ²
DIMENSIONS (L x l x h in mm)	170x56x100
WEIGHT	1.800 kg

CATENARY MAINTENANCE



18V
2Ah

NEOELEC™
BDL041

APPLICATIONS

Kink remover: contact wires
107mm² and 150mm² copper,
copper-cadmium, copper-tin and
copper-magnesium

DIMENSIONS (L x l x h in mm) 375x80x210

FORCE 40kN

WEIGHT (with battery) 4.950 kg

Delivered in carrying case with charger and 2.0Ah battery



18V
2Ah

NEOELEC™
BR020

APPLICATIONS

Dropper claw setting and
removing tool
Remove pins from claws 4001,
4006...

DIMENSIONS (L x l x h in mm) 350x180x290

FORCE 20kN

WEIGHT (with battery) 5.200 kg

Delivered in carrying case with charger and 2.0Ah battery



TEMPORARY OVERHEAD CONTACT DROPPER

APPLICATIONS 1500V rail networks with
auxiliary bearer cable.

DIMENSIONS (L x l x h in mm) 373x60x260

WEIGHT 0.330 kg

SWITCH ROD HEAD TELESCOPIC POLE



TPU2

APPLICATIONS	750V, 1 500V, 3 000V, 15 000V and 25 000V rail networks
SHORT-CIRCUIT WITHSTAND STRENGTH	80 000A
WEIGHT	1.160 kg

Optional: Contact braid replacement kit



TPU-TRAM

APPLICATIONS	750V and 1 500V rail networks
SHORT-CIRCUIT WITHSTAND STRENGTH	35 000A
WEIGHT	0.920 kg

Optional: Contact braid replacement kit



PITM

APPLICATIONS	750V, 1 500V, 3 000V, 15 000V and 25 000V rail networks
LENGTH	2.15m to 5.60m (7.60m with extension)
WEIGHT	3.500 kg

Red tube: foam-covered upper tube (standard IEC 60855-1)
White tubes: hollow middle and lower tubes (standard IEC 61235)



PIM-TRAM

APPLICATIONS	750V networks and more
LENGTH	1.30m + 2.20m to 3.90m (5.90m with extension)
WEIGHT	1.200 kg + 2.600 kg

Red tube: foam-covered upper tube (standard IEC 60855-1) + reflective signalling cone
White tubes: Hollow middle and lower tubes (standard IEC 61235)

SETTING TOOLS FOR RAIL BONDS



XPH3INP - XPH4INP - XPH6INP

XPH3INP	M10 rail bonds setting
XPH4INP	M12 rail bonds setting
XPH6INP	M16 rail bonds setting
HEAD DIMENSIONS (L x Ø in mm)	88x58
XPH3INP FORCE	27kN
XPH4INP FORCE	37kN
XPH6INP FORCE	60kN
WEIGHT (tool and hose)	2.000 kg
WEIGHT (head)	1.300 kg



RAIL BONDS

Delivered in canvas bag



18V
2Ah

NEOELEC™











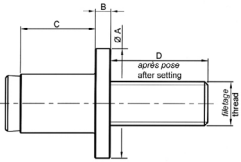
XPH3INE - XPH4INE - XPH6INE

XPH3INE	M10 rail bonds setting
XPH4INE	M12 rail bonds setting
XPH6INE	M16 rail bonds setting
HEAD DIMENSIONS (L x Ø in mm)	88x58
XPH3INE FORCE	27kN
XPH4INE FORCE	37kN
XPH6INE FORCE	60kN
WEIGHT (tool with battery and hose)	2.800 kg
WEIGHT (head)	1.300 kg

Delivered with charger and 2.0Ah battery

ELECTRICAL CONNECTION TO THE RAIL

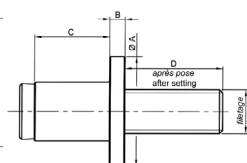


THREAD	M6	M6	M10	M10	M10
DRILLING DIAMETER (mm)	Ø 8 > 8.2	Ø 8.5 > 8.7	Ø 13.5 > 13.7	Ø 13.5 > 13.7	Ø 13.5 > 13.7
RAIL WEB THICKNESS	17 mm max.	17 mm max.	17 mm max.	17 mm max.	15 mm min.
PACKAGING M6 BOX OF 20 BONDS + FASTENING M10 BOX OF 10 BONDS + FASTENING					
BOND PART No.	30996	30989	77911	81974	80913
APPROVAL			SNCF: 7.952.0882	SNCF: 7.952.1513	SNCF: 7.952.0900
BUSHING MATERIAL	Tin-plated copper	Tin-plated copper	Tin-plated copper	Tin-plated copper	Tin-plated copper
BUSHING LENGTH	17 mm	17 mm	17 mm	15.5 mm	6.5 mm
HARDWARE					
CONTACT SURFACE	427 mm ²	453 mm ²	721 mm ²	640 mm ²	275 mm ²
REAMER DRILL ADAPTER	30776	80312 86070	86225 86859	86225 86859	86225 86859
SETTING TOOL	PH1IN	PH1IN	PH3IN	PH3IN	PH3IN
TORQUE WRENCH + SOCKET	80997 +OFACR10	80997 +OFACR10	80967 +OFACS16H	80967 +OFACS16H	80967 +OFACS16H
TORQUE VALUE	10 Nm	10 Nm	40 Nm	40 Nm	40 Nm
	DIMENSIONS (mm)	Ø A	25	25	25
		Ø B	3.5	3.5	3.5
	Ø C	17	15.5	6.5	
	Ø D	23	23	23	
	WEIGHT		51 gr	46 gr	35 gr
ELECTRICAL SPECIFICATIONS	TOTAL ELECTRICAL RESISTANCE		12 µΩ	12 µΩ	12 µΩ
	ELECTRICAL RESISTANCE OF THE BOND – RAIL CONTACT		4 µΩ	5 µΩ	6 µΩ
ELECTRICAL TESTS	ABILITY TO WITHSTAND HEATING		Current between 1000 & 1500 A for 50 minutes (train passing 10 times).		
	SHORT-CIRCUIT WITHSTAND STRENGTH		3 short-circuit tests at 7000 A 0.2s		
	CORROSION RESISTANCE		300 hours in salt mist (NFX41002)		
OTHER TESTS	ABILITY TO WITHSTAND VIBRATION		Acceleration from 7 to 16 g along 3 axes, 8 hours per axis.		
	RESISTANCE TO THERMAL SHOCK		-30°C / +70°C		
	RESISTANCE TO PRESSURE (coloured water)		No leakage before: 250 Bar.		
APPLICATION EXAMPLE			Traction current return/Signalling	AD connection	Double connection

ELECTRICAL CONNECTION TO THE RAIL



THREAD	M12	M12D	M12	M16	
DRILLING DIAMETER (mm)	Ø 19 > 19.2	Ø 19 > 19.2	Ø 22 > 22.2	Ø 22 > 22.2	
RAIL WEB THICKNESS	17 mm max.	16 – 18 mm	22 mm max.	22 mm max.	
PACKAGING BOX OF 10 BONDS + FASTENING					
BOND PART No.	80917 / 77918	77928	30987	30986	
APPROVAL			RAILTRACK	RAILTRACK	
BUSHING MATERIAL	Tin-plated copper	Tin-plated copper	Tin-plated copper	Tin-plated copper	
BUSHING LENGTH	17 mm	15.5 mm	22 mm	22 mm	
HARDWARE					
CONTACT SURFACE	1014 mm ²	925 mm ²	1451 mm ²	1451 mm ²	
REAMER ANNULAR CUTTER ADAPTER	80396 80373	80396 80373	80365 80373	80365 80373	
SETTING TOOL	PH4IN	PH4IN + draw stud 78410	PH4IN	PH6IN	
TORQUE WRENCH + SOCKET	80967 +OFACS18H	80967 +OFACS18H	80967 +OFACS18H	80968 +OFACS24H	
TORQUE VALUE	80 Nm	80 Nm	80 Nm	150 Nm	
DIMENSIONS (mm)	Ø A	30	30	30	35
	Ø B	5	4	5	5
	Ø C	17.5	15.5	22	22
(in rail thickness 16.5 mm)	Ø D	24	24	31	37
WEIGHT	93 gr	190 gr	122 gr	165 gr	
ELECTRICAL SPECIFICATIONS					
TOTAL ELECTRICAL RESISTANCE	15 µΩ	15 µΩ	10 µΩ	10 µΩ	
ELECTRICAL RESISTANCE OF THE BOND – RAIL CONTACT	5 µΩ	5 µΩ	3 µΩ	3 µΩ	
ELECTRICAL TESTS					
ABILITY TO WITHSTAND HEATING	1h00 at 250 A + 2h30 at 500 A + 1h30 at 2000 A			1000 cycles of 5 minutes at 2800A Constant current 8 hours at 1000A	
SHORT-CIRCUIT WITHSTAND STRENGTH				3 short-circuit tests at 34 000 A 1 s	
OTHER TESTS					
RESISTANCE TO THERMAL SHOCK				-30°C / +70°C	
APPLICATION EXAMPLE	Tramway				



SETTING TOOLS FOR EARTH BONDS



MTPMXX



EARTH BONDS

APPLICATIONS	M5 M6 M8 and M10 setting Male threaded earth bond and female grounding range
DIMENSIONS (L x l x h in mm)	192x52x207
FORCE	Adjustable 6 to 25kN
WEIGHT	1.440 kg

Delivered in carrying case with M6, M8 and M10 screwed connection and M6, M8 and M10 nose



18V
2Ah

NEOELEC™ BTEMXX

APPLICATIONS	M5 M6 M8 and M10 setting Male threaded earth bond and female grounding range
DIMENSIONS (L x l x h in mm)	373x60x260
FORCE	Adjustable 6 to 25kN
WEIGHT (with battery)	3.440 kg

Delivered in carrying case with charger and 2.0Ah battery, M6, M8 and M10 screwed connection and M6, M8 and M10 nose

CUTTING TOOLS WITH BATTERY



This tool is not made for cutting cables



NEOELEC™ BCP008C

18V
5Ah

18V
2Ah

APPLICATIONS	Up to Ø8 rebar Up to M10 threaded rod
PROTECTION RATING	IP 44
DIMENSIONS (L x l x h in mm)	455x86x335
FORCE	24kN
WEIGHT	4.600 kg

Delivered in carrying case with charger and 5.0Ah battery



Do not cut live cables



NEOELEC™ BCL035i

APPLICATIONS	Multi-strand copper/aluminum
DIMENSIONS (L x l x h in mm)	107x78x445
FORCE	43kN
WEIGHT (with battery)	3.300 kg

Delivered in carrying case with charger and 2.0Ah battery



Do not cut live cables



18V
5Ah

NEOELEC™ BCP085G

APPLICATIONS	Telecom & Underground Cable up to Ø85mm Copper up to 4x240mm ² + 1x120mm ²
DIMENSIONS (L x l x h in mm)	580x86x340
FORCE	70kN
PROTECTION RATING	IP 44
WEIGHT (with battery)	8.800 kg

Delivered in carrying case with charger and 5.0Ah battery

CUTTING TOOLS WITH BATTERY



Do not cut live cables



18V
5Ah

NEOELEC™
BCP016C

APPLICATIONS	Up to Ø16 rebar Up to M18 threaded rod
PROTECTION RATING	IP 44
DIMENSIONS (L x l x h in mm)	585x160x430
FORCE	80kN
WEIGHT (with battery)	11.000 kg

Delivered with charger and 5.0Ah battery



Do not cut live cables

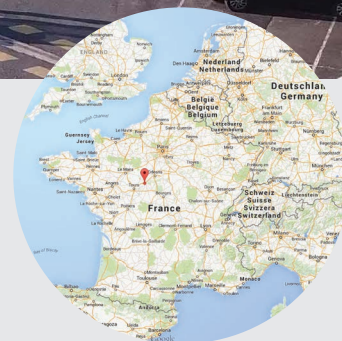


18V
5Ah

NEOELEC™
BCP017C

APPLICATIONS	Up to Ø16 rebar Up to M18 threaded rod
PROTECTION RATING	IP 44
DIMENSIONS (L x l x h in mm)	1025x160x430
FORCE	80kN
WEIGHT (with battery)	11.800 kg

Delivered with charger and 5.0Ah battery



Distributed by:

DUBUIS

17 - 19 Rue Jules Berthonneau
C.S. 73406 - ZI de Villebarou
41034 BLOIS CEDEX
FRANCE

Tél. : +33 (0) 2 54 52 40 00
Email : commercial@dubuis.com
www.dubuis.com - www.stanleyinfrastructure.com

